

PC EXHIBIT I

SYMBOLS LIST

DRAWING INDEX

GENERAL NOTES

LIGHTING

- LAY-IN CEILING MOUNTED LIGHT FIXTURE
- LIGHT FIXTURE, SURFACE OR PENDANT MOUNTED
- SURFACE MOUNTED LINEAR WALL MOUNT FIXTURE
- RECESSED LED DOWNLIGHT
- SURFACE MOUNT LED LIGHT FIXTURE
- LED DIRECTIONAL OR ACCENT LIGHT FIXTURE
- LED BOLLARD LIGHT FIXTURE
- LED WALL MOUNTED SCONCE LIGHT FIXTURE
- LED LINEAR UNDER-SURFACE MOUNTED LIGHT FIXTURE
- LED SURFACE MOUNTED WRAP LIGHT FIXTURE
- EXIT FIXTURE, CEILING OR WALL MOUNTED, DIRECTIONAL ARROWS AS INDICATED
- SHADING OF ANY FIXTURE INDICATES CONNECTION TO EMERGENCY SYSTEM

POWER

- PANELBOARD, 277/480V, SURFACE MOUNTED
- PANELBOARD, 277/480V, FLUSH MOUNTED
- PANELBOARD, 120/208V, SURFACE MOUNTED
- PANELBOARD, 120/208V, FLUSH MOUNTED
- ELECTRIC MOTOR-CONNECTION, NUMBER INDICATES HORSEPOWER
- JUNCTION BOX, CEILING MOUNTED
- JUNCTION BOX, FLUSH FLOOR MOUNTED
- FLUSH WALL MOUNTED JUNCTION BOX
- DUPLEX CONVENIENCE OUTLET, +18" AFF UON
- DOUBLE DUPLEX CONVENIENCE OUTLET, +18" AFF UON
- DUPLEX GFI OUTLET, +18" AFF UON
- DOUBLE DUPLEX GFI OUTLET, +18" AFF UON
- SHADING THROUGH CENTER OF OUTLET INDICATES OUTLET ON EMERGENCY
- TELE/POWER POLE, INSTALL PER MFR'S INSTRUCTIONS.
- SPECIALTY OUTLET, 18" UON, TYPE AS NOTED ON PLANS
- HEAVY DUTY FUSIBLE SAFETY SWITCH
40/60/3/460 =AMP FUSE/AMP SWITCH/POLES/MAX VOLTS
- PACKAGE CONTROLLER OR STARTER FURNISHED UNDER ANOTHER DIVISION, INSTALLED AND WIRED UNDER THIS DIVISION.

RACEWAYS

- G GROUND CONDUCTOR
 - CONDUIT RUN CONCEALED IN SLAB, UNDERSLAB OR UNDERGROUND
 - CONDUIT RUN CONCEALED IN WALL OR CEILING
 - CONDUIT HOMERUN, CONTINUOUS RUN TO PANEL OR EQUIPMENT CABINET
 - FLEXIBLE METALLIC CONDUIT
 - CONDUIT TURNED UP
 - CONDUIT TURNED DOWN
 - CROSS MARKS ON BRANCH CIRCUIT CONDUIT RUNS INDICATE THE QUANTITY OF CONDUCTORS AS FOLLOWS:
 - NEUTRAL CONDUCTOR(S)
 - PHASE CONDUCTORS
 - GROUND BAR, REFER TO DETAIL
1. NO CROSS MARKS INDICATES TWO #12 AWG CONDUCTORS, U.O.N.
 2. THREE TO SIX CROSS MARKS INDICATES THE QUANTITY OF #12 AWG CONDUCTORS, U.O.N.
 3. SEVEN OR MORE CROSS MARKS INDICATES THE QUANTITY OF #10 AWG CONDUCTORS, U.O.N.
 4. ALL 120V, 20A HOMERUNS LONGER THAN 100' AND ALL 277V, 20A HOMERUNS LONGER THAN 150' SHALL BE #10 MINIMUM
 5. EXPOSED RACEWAYS IN MECHANICAL ROOMS AND ELECTRICAL ROOMS SHALL BE EMT OR RIGID

- E0.01 SYMBOLS LIST, GENERAL NOTES, ABBREVIATIONS & DRAWING INDEX
- E0.02 FIXTURE SCHEDULE
- E1.01 PRELIMINARY SITE LIGHTING PLAN
- E1.02 PHOTOMETRIC PLAN

ABBREVIATIONS

AC	ALTERNATING CURRENT	NL	NIGHT LIGHT
A/C	AIR CONDITIONER	NTS	NOT TO SCALE
AFF	ABOVE FINISHED FLOOR	N/A or NA	NOT APPLICABLE
ALT	ALTERNATE	NO	NUMBER
AA/F/A	AMBIENT AIR/FORCED AIR	NIC	NOT IN CONTRACT
AUX	AUXILIARY	NF	NONFUSIBLE
A OR AMP	AMPERE	NPA	NATIONAL PURCHASING AGREEMENT
A.T.S	AUTOMATIC TRANSFER SWITCH	OC	ON CENTER
BD	BOARD	PH	PHASE
CB	CIRCUIT BREAKER	PNL	PANEL
C	CONDUIT	PB	PULL BOX
CAB	CABINET	PVC	POLYVINYL CHLORIDE
CLG	CEILING	P	POLE
CCT	CIRCUIT	PT	POTENTIAL TRANSFORMER
COAX	COAXIAL	RECEPT	RECEPTACLE
CONT	CONTINUOUS	REQ.D.	REQUIRED
CONTR	CONTRACTOR	RM	ROOM
CORR.	CORRIDOR	S	SAFETY
CRT	CATHODE RAY TUBE	S/N	SOLID NEUTRAL
CT	CURRENT TRANSFORMER	SES	SERVICE ENTRANCE SECTION
DGP	DATA GATHERING PANEL	SHT	SHEET
DIA	DIAMETER	STD	STANDARD
DIAG	DIAGRAM	SWT	SWITCH
DC	DIRECT CURRENT	SWBD	SWITCHBOARD
DISC	DISCONNECT	TELE	TELEPHONE
DIST	DISTRIBUTION	TTB	TELEPHONE TERMINAL BOARD
DN	DOWN	TV	TELEVISION
DPST	DOUBLE POLE SINGLE THROW	TS	TIME SWITCH
DSD	DUCT SMOKE DETECTOR	TP	TAMPER PROOF
EC	EMPTY CONDUIT	T	TRANSFORMER
ELEC	ELECTRICAL	TYP	TYPICAL
EMT	ELECTRICAL METALLIC TUBING	TC	TIMECLOCK
EP	EMERGENCY POWER	UF	UNDERFLOOR
EPO	EMERGENCY POWER OFF	UG	UNDERGROUND
EUGP	EXISTING UNDERGROUND PRIMARY	UGE	UNDERGROUND ELECTRIC
EUGS	EXISTING UNDERGROUND SECONDARY	UGP	UNDERGROUND PRIMARY
EWC	ELECTRIC WATER COOLER	UGS	UNDERGROUND SECONDARY
EXP	EXPLOSION PROOF	UON	UNLESS OTHERWISE NOTED
FIXT	FIXTURE	V	VOLT
FLEX	FLEXIBLE	VA	VOLTAMPERE
FLR	FLOOR	VFD	VARIABLE FREQUENCY DRIVE
FVNR	FULL VOLTAGE, NON REVERSING	WW	WIREWAY
GFI	GROUND FAULT INTERRUPTER	W	WATT OR WIRE
GFP	GROUND FAULT PROTECTION	WP	WEATHERPROOF
GRC	GALVANIZED RIGID CONDUIT	XFMR	TRANSFORMER
GRD	GROUND		
GFCT	GROUND FAULT CURRENT TRANSFORMER		
HG	HOSPITAL GRADE		
HGT	HEIGHT		
HP	HORSEPOWER		
HTR	HEATER		
HZ	HERTZ		
IMC	INTERMEDIATE METAL CONDUIT		
ISO	ISOLATED		
JB OR J-BOX	JUNCTION BOX		
KVA	KILOVOLT AMPERE		
KW	KILOWATT		
KWH	KILOWATT HOUR		
KALC	KILO-AMPERES INTERRUPTING CURRENT		
LT	LIGHT		
LTFIX	LIGHT FIXTURE		
LV	LOW VOLTAGE		
LCP	LIGHTING CONTROL PANEL		
MFR	MANUFACTURER		
MAX	MAXIMUM		
MIN	MINIMUM		
MCC	MOTOR CONTROL CENTER		
MT	MOUNT		
MTD	MOUNTED		
MTG	MOUNTING		
MLO	MAIN LUGS ONLY		
MCB	MAIN CIRCUIT BREAKER		

1. MAINTAIN FIRE RATING OF ALL FLOORS, CEILINGS AND WALLS PENETRATED BY ELECTRICAL WORK.
2. ELECTRICAL DEVICE OPENINGS IN FIRE RATED WALLS SHALL NOT EXCEED 16 SQUARE INCHES, AND SHALL NOT EXCEED 100 SQUARE INCHES PER 100 SQUARE FEET OF WALL AREA. DEVICE OPENINGS ON OPPOSITE SIDES OF FIRE RATED WALLS SHALL BE HORIZONTALLY SEPARATED BY A MINIMUM OF 24 INCHES.
3. ALL ELECTRICAL EQUIPMENT SHALL BE BRACED OR ANCHORED TO RESIST A HORIZONTAL FORCE ACTING IN ANY DIRECTION PER THE 2013 CALIFORNIA BUILDING CODE.
4. VERIFY CIRCUIT VOLTAGE OF SUPPLY CIRCUIT SHOWN ON PLANS FOR ALL LIGHT FIXTURES. PROVIDE FIXTURES/DRIVERS SUITABLE FOR SUPPLY CIRCUIT VOLTAGE.
5. UNLESS OTHERWISE NOTED, CONDUIT ROUTING, IF SHOWN, IS ESSENTIALLY DIAGRAMMATIC. CONTRACTOR SHALL LAYOUT RUNS TO SUIT FIELD CONDITIONS AND THE COORDINATION REQUIREMENTS OF UTILITIES AND OTHER TRADES.
6. INSTALL AND CONNECT A CODE SIZED INSULATED COPPER EQUIPMENT GROUNDING CONDUCTOR IN ALL BRANCH CIRCUIT AND FEEDER CONDUITS. THESE EQUIPMENT GROUND WIRES ARE NOT SHOWN ON THE PLANS, INCREASE CONDUIT SIZE WHERE REQUIRED.
7. INSTALL A POLYETHYLENE PULLING ROPE IN ALL EMPTY CONDUITS.
8. MOUNTING HEIGHTS SHOWN ARE FROM FINISHED FLOOR TO THE CENTERLINE OF THE DEVICE, U.O.N. ALL MOUNTING HEIGHTS SHALL BE AS SHOWN ON THE SYMBOLS LIST UNLESS OTHERWISE NOTED ON THE PLANS OR IN THE SPECIFICATIONS.
9. ALL CONDUIT AND RACEWAY PENETRATIONS THROUGH FIRE RATED WALLS AND FLOORS SHALL BE MADE IN ACCORDANCE WITH 2013 CALIFORNIA BUILDING CODE, CHAPTER 7.
10. ALL CIRCUITS SHALL HAVE A DEDICATED NEUTRAL CONDUCTOR. OTHERWISE, FOR MULTI-WIRE BRANCH CIRCUITS USE MULTI-POLE (HANDLE-TIE) CIRCUIT BREAKERS.
11. SUBSCRIPTS ON SWITCH SYMBOLS (S_a) DENOTE THE FIXTURE CONTROLLED.
12. VERIFY THE EXACT LOCATION OF ALL EQUIPMENT FURNISHED BY OTHERS PRIOR TO DETERMINING CONDUIT TERMINATION POINTS.
13. VERIFY CEILING TYPE FOR ALL FIXTURES. PROVIDE MOUNTING/TRIM HARDWARE SUITABLE FOR CEILING CONTAINING EACH FIXTURE.
14. ALL WIRING DEVICES SHALL BE PERMANENTLY LABELED WITH PANEL AND CIRCUIT NUMBER SUPPLYING THEM.
15. ALL EQUIPMENT TO BE INSTALLED OR PERMANENTLY CONNECTED (HARDWIRED) SHALL BE LISTED, LABELED OR CERTIFIED BY A NATIONALLY RECOGNIZED TESTING LABORATORY (NRTL).
16. ALL RECEPTACLES, SWITCHES, AND JUNCTION BOXES SHALL BE COLOR CODED AND IDENTIFIED PER THE DIVISION 26 SPECIFICATIONS. ALL EMERGENCY SYSTEM DEVICES AND COVERPLATES SHALL BE RED IN COLOR.

LIGHTING CONTROL

- SINGLE POLE TOGGLE SWITCH, +45" UON, SUBSCRIPT INDICATES FIXTURES CONTROLLED
- KEY OPERATED TOGGLE SWITCH, +45" UON
- WALLBOX DIMMER SWITCH, +45" UON
- OCCUPANCY SENSOR SWITCH, WALL MOUNTED +45" UON
- STANDALONE OCCUPANCY SENSOR, CEILING MOUNTED, COMPLETE WITH SWITCHPACK. PROVIDE CONNECTION BETWEEN SENSOR AND SWITCHPACK USING LOW-VOLTAGE CABLING PER MANUFACTURER'S INSTRUCTIONS.
- WALL MOUNTED CONTROL STATION.
- CONTROL STATION IN LOCATION OTHER THAN WALL. MOUNT AS DESCRIBED ON DRAWINGS.
- ROOM CONTROLLER RELAY UNIT. MOUNT ABOVE CEILING OR IN LOCATIONS AS INDICATED ON DRAWINGS.
- DAYLIGHT SENSOR. LOCATE PER DRAWINGS.
- CEILING MOUNTED OCCUPANCY SENSOR.

CONVENTIONS

- NUMBERED SHEET NOTE, APPLIES TO DRAWING CONTAINING NOTES ONLY
- MECHANICAL EQUIPMENT IDENTIFICATION TAG:
 - AC: AIR CONDITIONING UNIT
 - CU: CONDENSING UNIT
 - EF: EXHAUST FAN
 - HP: HEAT PUMP
 - HV: HEAT VENT UNIT
 - TEF: TOILET EXHAUST FAN
- ADDENDUM, BULLETIN, OR REVISION NUMBER
- FEEDER TAG
- EQUIPMENT TAG
- DETAIL REFERENCE:
 - DETAIL DESIGNATION
 - SHEET NUMBER
- FIXTURE IDENTIFICATION TAG:
 - FIXTURE TYPE
- (1) 1-1/4
DASH INDICATES FRACTION
PARENTHESIS INDICATES QUANTITY

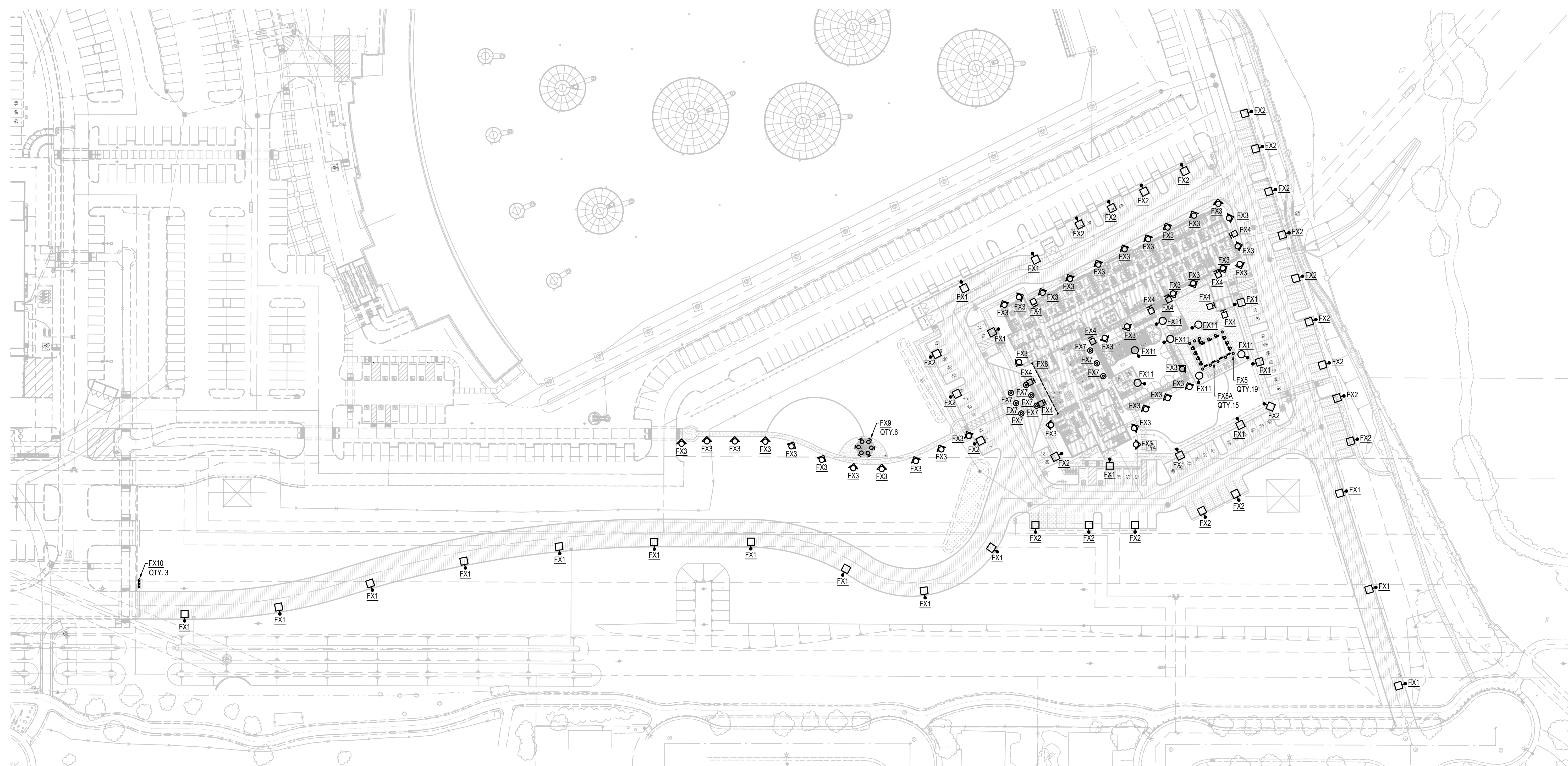


FIXTURE SCHEDULE

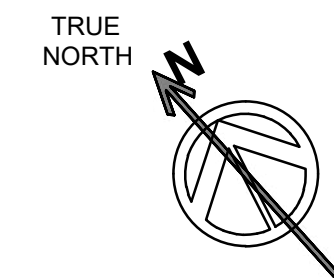
TYPE	DESCRIPTION	MOUNTING	MANUFACTURER	PART NUMBER	LAMPING	CRI	LUMENS	WATTS	CONTROL	POWER SUPPLY	VOLTAGE	APPLICATION
FX1	15.2" wide x 32" long, slim LED area head with wide "type 3" distribution and house side shield for backlight control, on 12" pole. Architect to select fixture finish.	Pole, 12" tall	Signify Gardco Signify Hadco	P26-48L-400-WW-G2-AR-3-VOLTAGE -(optional: BL-IMRI3-PCB)-FINISH + HIS-48-H + P195-12-FINISH-N-N-T4	3000K LED	70	7,420	60	TIMECLOCK ON/OFF, CENTRAL PHOTOCELL OPTIONAL: INTEGRAL DIMMING MOTION SENSOR	0-10v Dimmable	120 or 277	ROADWAY, PARKING
FX2	Similar to type FX1, but provide with forward throw, "type 4" distribution.	Pole, 12" tall	Signify Gardco Signify Hadco	P26-48L-400-WW-G2-AR-4-VOLTAGE -(optional: BL-IMRI3-PCB)-FINISH + HIS-48-H + P195-12-FINISH-N-N-T4	3000K LED	70	7,698	60	TIMECLOCK ON/OFF, CENTRAL PHOTOCELL OPTIONAL: INTEGRAL DIMMING MOTION SENSOR	0-10v Dimmable	120 or 277	PARKING
FX3	36" Tall LED bollard with asymmetric distribution. Architect to select fixture finish.	Bollard, 36" tall	Signify Gardco	BR840-36-14L-175-WW-G2-3-UNV-(Optional: IMRI-PCB)-FINISH	3000K LED	70	1,876	16.8	TIMECLOCK ON/OFF, CENTRAL PHOTOCELL OPTIONAL: INTEGRAL DIMMING MOTION SENSOR	0-10v Dimmable	120 or 277	PEDESTRIAN WALKWAY
FX4	12" tall x 12" wide LED wall sconce with wall-illuminating distribution. Architect to select fixture finish.	Wall, 7'-0" AFG to BOF	ALVA	TEX-SQUARED-12-FINISH-3000	3000K LED	80	792	24	TIMECLOCK ON/OFF, CENTRAL PHOTOCELL	0-10v Dimmable	120-277	BUILDING EXITS
FX5	3-inch Diameter LED in-grade light, listed for use near or in pool. Provide with one remote power supply for up to 4 fixtures.	In-Grade	MP LIGHTING	U358-7-W30H-D-B-15-S6 + LED18W35iZ-01 (Remote power supply for 4 fixtures connected in series)	3000K LED	90	4	8	TIMECLOCK ON/OFF, CENTRAL PHOTOCELL	Remote, 0-10v Dimmable	120-277	POOL PERIMETER
FX5A	Similar to FX5, but provide with asymmetric distribution, baffle, and mount to vertical wall of pool.	Pool in-wall, 3' BFG to TOF	MP LIGHTING	U368-8W-WH30H-N-F-HM2-MK1-B-15-S6 + LED60W12VP-01B (Remote power supply and enclosure for up to 6 fixtures connected in parallel) + TLC010i Dimmer	3000K LED	90	275	8	TIMECLOCK ON/OFF, CENTRAL PHOTOCELL	Remote, 0-10v Dimmable	120-277	POOL
FX6	NOT USED											
FX7	7.5" Diameter LED Canopy mounted round with 53 degree distribution and diffusing decorative glass lens. Architect to select fixture finish.	Surface, Canopy	BEGA	66 057-K3-FINISH	3000K LED	90	1,985	22	TIMECLOCK ON/OFF, CENTRAL PHOTOCELL	0-10v Dimmable	120-277	ENTRY CANOPIES
FX8	Concealed LED, continuous Tapelight in rigid channel with high output grazing to run along building entry at top and sides. Refer to architectural details for further information and fixture lengths.	Cove, Height Varies	Kelvix	Z5+LENGTH-8W-30-3055-CP-FINISH (Fixture) + HLV192 (Power Supply for every 24 feet of fixture) + Z-57-FML-50 (power lead) + Z-57-FMC-X (Connectors, quantity and length as required)	3000K LED	90	800 / FT	8 / FT	TIMECLOCK ON/OFF, CENTRAL PHOTOCELL	Remote, 0-10v Dimmable	120-277	FAÇADE AT ENTRY
FX9	4" square, direct/indirect wall sconce. Contractor to provide with mini splice box for mounting. Architect to select fixture finish. Provide with diffuse uplight and asymmetric 10 degree downlight.	Gazebo Vertical support, 6'-8" AFF	DesignPlan	KA121-DOWN [0-F-W]-UP [1-F-D]-FINISH +	2700K LED	80	119 LM DN, 478 LM UP	22	TIMECLOCK ON/OFF, CENTRAL PHOTOCELL	Static	120	GAZEBO
FX10	8.5" wide x 4" diameter sign light with wall wash distribution, integral driver, and rectilinear lens.	At-Grade	BK Lighting	YO-LED-x44-WW-FINISH-9 (Fixture) + HP2-010-FINISH-MT (Housing + power supply)	3000K LED	80	2,631	34	TIMECLOCK ON/OFF, CENTRAL PHOTOCELL	0-10v Dimmable	120	MONUMENT SIGN
FX11	Globe style lantern pole-top fixture on 10' pole, to match existing facility standard. Provide with type 3 distribution.	Pole, 8' tall, OAH 10'-6" to TOF	Signify Hadco	CL32-R-K-K-A-1-H-W-W-A-4-N-N-N-N + 7.5' POLE (Design, base, by architect)	3000K LED	70	3,628	39	TIMECLOCK ON/OFF, CENTRAL PHOTOCELL	0-10v Dimmable	120-277	PEDESTRIAN AREAS



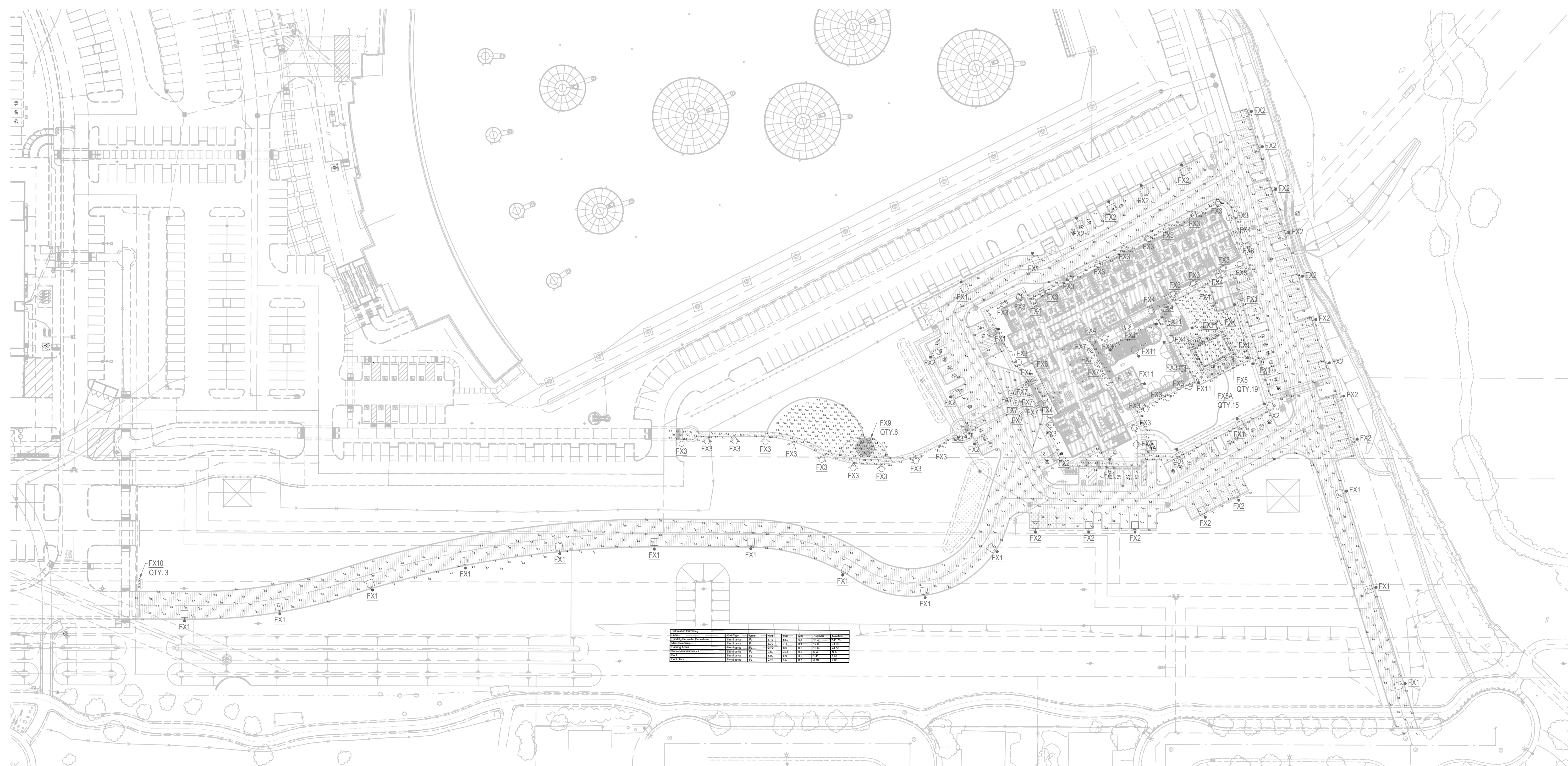
K:\105\RY\2022-108 Roseville Homewood Suites Hotel\1-Drawings\2D\Working Folder\RH-SH - E002.dwg, 1/12/2023 1:10:07 PM, lgnaco



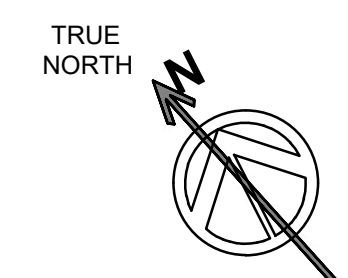
① SITE LIGHTING PLAN
1" = 50'-0"



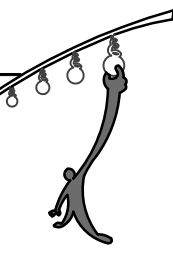
K:\105-RY-2022-08 Roseville Homewood Suites Hotel\1-Drawings\2D\Working Folder\RH-SH - E1.01.dwg, 1/12/2023 1:10:29 PM, Ignacio



1 PHOTOMETRIC PLAN
1" = 50'-0"



DISCLAIMER:
DRAWING MAY NOT BE TO SCALE. LIGHTING CALCULATIONS HAVE BEEN PERFORMED ACCORDING TO MANUFACTURER STANDARDS. SOME DIFFERENCES BETWEEN MEASURED VALUES AND CALCULATED RESULTS MAY OCCUR DUE TO VARIED CALCULATION METHODS, TESTING PROCEDURES, COMPONENT PERFORMANCE, MEASUREMENT TECHNIQUES AND FIELD CONDITIONS SUCH AS: COLOR AND FINISH OF WALLS, FURNITURE, FLOORING, AND EXTERIOR SITE GRADING. THESE CALCULATIONS ARE FOR REFERENCE



K:\105\RY\2022-08_Roseville_Homewood_Suites_Hotel\1-Drawing\20\Working_Folder\RH-SH - E102.dwg, 11/12/2023 1:10:59 PM, Ignacio

Application

LED pole-top luminaire with asymmetrical flat beam light distribution designed for the illumination of parking areas and roadways. Tool-less entry with hinged door for ease of maintenance. Provided with slip fitter to fit 3" O.D. poles.

Materials

Luminaire housing and pole fitter constructed of die-cast marine grade, copper free ($\leq 0.3\%$ copper content) A360.0 aluminum alloy
 Clear safety glass with anti-reflective coating for increased transmission
 Reflector made of pure anodized aluminum
 Silicone applied robotically to casting, plasma treated for increased adhesion
 High temperature silicone gasket
 Mechanically captive stainless steel fasteners

NRTL listed to North American Standards, suitable for wet locations
 Protection class IP66

Weight: 9.7 lbs.

EPA (Effective projection area): 0.32 sq. ft.

Electrical

Operating voltage	120-277VAC
Minimum start temperature	-30° C
LED module wattage	23.6 W
System wattage	29.0 W
Controllability	0-10V, TRIAC, and ELV dimmable
Color rendering index	Ra > 80
Luminaire lumens	3,492 lumens (3000K)
Lifetime at Ta=15° C	>500,000 h (L70)
Lifetime at Ta=45° C	308,000 h (L70)

LED color temperature

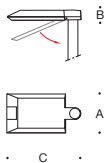
- 4000K - Product number + **K4**
- ~~3500K - Product number + **K35**~~
- 3000K - Product number + **K3**
- 2700K - Product number + **K27**

BEGA can supply you with suitable LED replacement modules for up to 20 years after the purchase of LED luminaires - see website for details

Finish

All BEGA standard finishes are matte, textured polyester powder coat with minimum 3 mil thickness.

Available colors	Black (BLK)	White (WHT)	RAL:
	Bronze (BRZ)	Silver (SLV)	CUS:



Pole-top luminaire · Asymmetrical flat beam

	LED	A	B	C
99499	23.6 W	10	2 ³ / ₈	17 ³ / ₈

Recommended for use with 15' to 20' poles

BEGA 1000 BEGA Way, Carpinteria, CA 93013 (805) 684-0533 info@bega-us.com

Due to the dynamic nature of lighting products and the associated technologies, luminaire data on this sheet is subject to change at the discretion of BEGA North America. For the most current technical data, please refer to bega-us.com
 © copyright BEGA 2018 Updated 03/15/19

Type:
 BEGA Product:
 Project:
 Modified:



Application

A round, non-tapered, aluminum pole with a fixed base. Useful for mounting pole-top luminaires, floodlights, banners, or other accessories. Consult a licensed structural engineer when specifying. Poles must be unwrapped when delivered and should not be allowed to sit in their packaging.

Materials & Specifications

Extruded aluminum pole shaft
 A356 aluminum alloy anchor base heat-treated to T6 temper
 Anchor bolts conform to ASTM F1554 Grade 55 with L bend on one end and galvanized minimum 12" on threaded end
 Anchor bolts provided with (2) hex nuts and (2) flat washers
 Aluminum nut covers
 Covered handhole with hardware and grounding provisions provided
 3" welded tenon
 Wall thickness: 0.125"
 Structural weight: 26 lbs

Maximum Luminaire Weight: 62 lbs

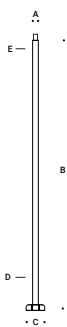
Finish

All BEGA standard finishes are a matte, textured powder coat with a minimum 3 mil thickness. BEGA Unidure® finish, a fluoropolymer technology, provides superior fade protection in Black, Bronze, and Silver. BEGA standard White, as well as optionally available RAL and custom colors, are a polyester powder.

Available colors	Black (BLK)	White (WHT)	RAL:
	Bronze (BRZ)	Silver (SLV)	CUS:

Disclaimer

BEGA North America warrants the specific anchor bolts and pole combination according to the product number(s) and description(s) indicated on the submittal sheet. Structural changes to the pole requested by the customer, including changes to pole length, may affect the compatibility of the anchor bolts and corresponding poles. BEGA North America is not responsible for the incompatibility of the anchor bolts and poles resulting from such structural changes without review by the BEGA North America engineering department. This includes, but is not limited to, any labor charges, charges for replacement materials and shipping. For safety reasons, do not mount more than 50 lbs. to hinged poles and more than 62 lbs. to fixed poles. Pole capacities are based upon the provisions of AASHTO 2013 (LTS-6) and assume a max vertical eccentricity to the fixture of 2'-0" above the pole top. Adequate drainage must be provided in concrete foundation or grout. Do not seal the base of the pole. Due to structural reasons, do not install pole without fixture or other appropriate weight on the top.



Aluminum pole · Round fixed non-tapered

12 RFNS1	A	B'	C	D	E	Anchorage
	3"	12'	8 7/8"	4"	4"	B12RFNS1-AB

Pole wind load rating

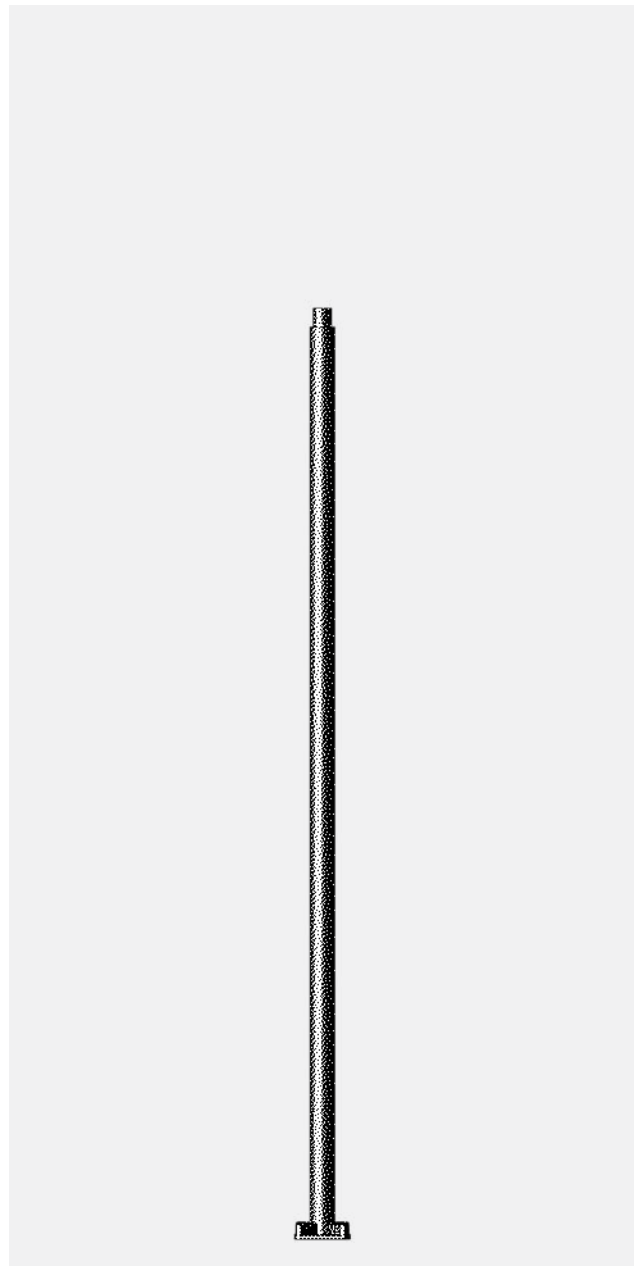
MPH	85	90	100	110	120	130	140	150
EPA"	5.1	4.4	3.2	2.4	1.8	1.4	1.2	1.0

Height is rounded to the nearest foot, for precise measurements see submittal drawing.
 *Data above assumes grade level installation and a maximum luminaire weight of 62 lbs.

BEGA 1000 BEGA Way, Carpinteria, CA 93013 (805) 684-0533 info@bega-us.com

Due to the dynamic nature of lighting products and the associated technologies, data on this sheet is subject to change at the discretion of BEGA North America. For the most current technical data, please refer to bega-us.com
 © copyright BEGA 2021 Updated 12/16/21

Type:
 BEGA Pole:
 Location:
 Quote or Sales Order:
 Date:
 Specifier:
 Representative:
 BEGA Luminaire:
 Total Mounted EPA:
 Total Mounted Weight:



Application

LED pole-top luminaire with asymmetrical light distribution designed for the illumination of parking areas and roadways. Tool-less entry with hinged door for ease of maintenance. Provided with slip fitter to fit 3" O.D. poles.

Materials

Luminaire housing and pole fitter constructed of die-cast marine grade, copper free ($\leq 0.3\%$ copper content) A360.0 aluminum alloy
 Clear safety glass with anti-reflective coating for increased transmission
 Reflector made of pure anodized aluminum
 Silicone applied robotically to casting, plasma treated for increased adhesion
 High temperature silicone gasket
 Mechanically captive stainless steel fasteners

NRTL listed to North American Standards, suitable for wet locations
 Protection class IP 66

Weight: 10.1 lbs.

EPA (Effective projection area): 0.32 sq. ft.

Electrical

Operating voltage	120-277V AC
Minimum start temperature	-30° C
LED module wattage	31.5 W
System wattage	37.0 W
Controllability	0-10V dimmable
Color rendering index	Ra > 80
Luminaire lumens	4,741 lumens (3000K)
Lifetime at Ta=15° C	>500,000 h (L70)
Lifetime at Ta=35° C	342,000 h (L70)

LED color temperature

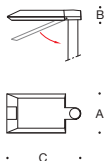
- 4000K - Product number + **K4**
- 3500K - Product number + **K35**
- 3000K - Product number + **K3**
- 2700K - Product number + **K27**

BEGA can supply you with suitable LED replacement modules for up to 20 years after the purchase of LED luminaires - see website for details

Finish

All BEGA standard finishes are matte, textured polyester powder coat with minimum 3 mil thickness.

Available colors	Black (BLK)	White (WHT)	RAL:
	Bronze (BRZ)	Silver (SLV)	CUS:



Pole-top luminaire · Asymmetrical light distribution

	LED	A	B	C
99519	31.5 W	10	2 3/8	17 3/8

Recommended for use with 25' to 35' poles

BEGA 1000 BEGA Way, Carpinteria, CA 93013 (805) 684-0533 info@bega-us.com

Due to the dynamic nature of lighting products and the associated technologies, luminaire data on this sheet is subject to change at the discretion of BEGA North America. For the most current technical data, please refer to bega-us.com
 © copyright BEGA 2018 Updated 01/17/19



Application

A round, non-tapered, aluminum pole with a fixed base. Useful for mounting pole-top luminaires, floodlights, banners, or other accessories. Consult a licensed structural engineer when specifying. Poles must be unwrapped when delivered and should not be allowed to sit in their packaging.

Materials & Specifications

Extruded aluminum pole shaft
 A356 aluminum alloy anchor base heat-treated to T6 temper
 Anchor bolts conform to ASTM F1554 Grade 55 with L bend on one end and galvanized minimum 12" on threaded end
 Anchor bolts provided with (2) hex nuts and (2) flat washers
 Aluminum nut covers
 Covered handhole with hardware and grounding provisions provided
 3" welded tenon
 Wall thickness: 0.125"
 Structural weight: 26 lbs

Maximum Luminaire Weight: 62 lbs

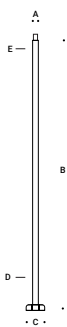
Finish

All BEGA standard finishes are a matte, textured powder coat with a minimum 3 mil thickness. BEGA Unidure® finish, a fluoropolymer technology, provides superior fade protection in Black, Bronze, and Silver. BEGA standard White, as well as optionally available RAL and custom colors, are a polyester powder.

Available colors	Black (BLK)	White (WHT)	RAL:
	Bronze (BRZ)	Silver (SLV)	CUS:

Disclaimer

BEGA North America warrants the specific anchor bolts and pole combination according to the product number(s) and description(s) indicated on the submittal sheet. Structural changes to the pole requested by the customer, including changes to pole length, may affect the compatibility of the anchor bolts and corresponding poles. BEGA North America is not responsible for the incompatibility of the anchor bolts and poles resulting from such structural changes without review by the BEGA North America engineering department. This includes, but is not limited to, any labor charges, charges for replacement materials and shipping. For safety reasons, do not mount more than 50 lbs. to hinged poles and more than 62 lbs. to fixed poles. Pole capacities are based upon the provisions of AASHTO 2013 (LTS-6) and assume a max vertical eccentricity to the fixture of 2'-0" above the pole top. Adequate drainage must be provided in concrete foundation or grout. Do not seal the base of the pole. Due to structural reasons, do not install pole without fixture or other appropriate weight on the top.



Aluminum pole · Round fixed non-tapered

12 RFNS1	A	B'	C	D	E	Anchorage
	3"	12'	8 7/8"	4"	4"	B12RFNS1-AB

Pole wind load rating

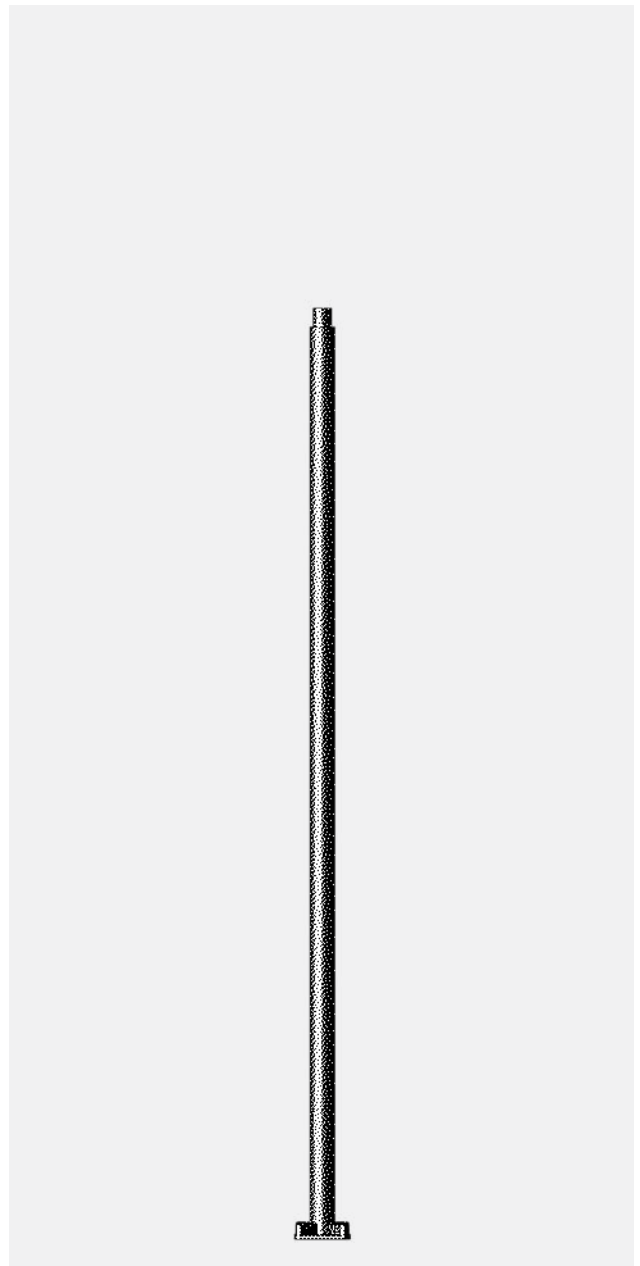
MPH	85	90	100	110	120	130	140	150
EPA"	5.1	4.4	3.2	2.4	1.8	1.4	1.2	1.0

Height is rounded to the nearest foot, for precise measurements see submittal drawing.
 *Data above assumes grade level installation and a maximum luminaire weight of 62 lbs.

BEGA 1000 BEGA Way, Carpinteria, CA 93013 (805) 684-0533 info@bega-us.com

Due to the dynamic nature of lighting products and the associated technologies, data on this sheet is subject to change at the discretion of BEGA North America. For the most current technical data, please refer to bega-us.com
 © copyright BEGA 2021 Updated 12/16/21

Type:
 BEGA Pole:
 Location:
 Quote or Sales Order:
 Date:
 Specifier:
 Representative:
 BEGA Luminaire:
 Total Mounted EPA:
 Total Mounted Weight:



Application

An LED bollard with shielded asymmetric light distribution. Designed for effective lighting of landscapes, pathways, and open spaces. The fully shielded design provides visual comfort while illuminating ground surfaces. Provided with mounting system that allows the luminaire to be adjusted independent of anchor bolt orientation.

Materials

Luminaire housing constructed of die-cast and extruded marine grade, copper free ($\leq 0.3\%$ copper content) A360.0 aluminum alloy
 Clear safety glass
 Reflector made of pure anodized aluminum
 High temperature silicone gasket
 Mechanically captive stainless steel fasteners
 Mounting plate constructed of heavy cast aluminum

NRTL listed to North American Standards, suitable for wet locations
 Protection class IP65
 Weight: 14.5lbs

Electrical

Operating voltage	120-277VAC
Minimum start temperature	-30° C
Maximum ambient temperature	90° C
LED module wattage	11.6W
System wattage	14.5W
Controllability	0-10V
Color rendering index	Ra > 80
Luminaire lumens	1475 lumens (4000K)
LED service life (L70)	60,000 hours

LED color temperature

- 4000K - Product number + **K4 (EXPRESS)**
- 3500K - Product number + **K35**
- 3000K - Product number + **K3 (EXPRESS)**
- 2700K - Product number + **K27**

Wildlife friendly amber LED - Optional

Luminaire is optionally available with a narrow bandwidth, amber LED source (585-600nm) approved by the FWC. This light output is suggested for use within close proximity to sea turtle nesting and hatching habitats. Electrical and control information may vary from standard luminaire.

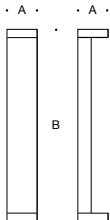
LED module wattage	17.6W (Amber)
System wattage	22.0W (Amber)
Luminaire lumens	574 lumens (Amber)

BEGA can supply you with suitable LED replacement modules for up to 20 years after the purchase of LED luminaires - see website for details

Finish

All BEGA standard finishes are matte, textured polyester powder coat with minimum 3 mil thickness.

Available colors	Black (BLK)	White (WHT)	RAL:
	Bronze (BRZ)	Silver (SLV)	CUS:



Shielded LED bollard · asymmetric

	LED	A	B	Anchorage
99 058	11.6W	7 1/2	39 3/8	79 817

Type:

BEGA Product:

Project:

Modified:

Mounting Accessories

79817	Anchorage Kit
70895	Direct burial anchorage

Available options

FSC	Fusing
AMB	Amber LED
FPRO	Factory Programmed Reduced output
EMPK	Integral Emergency Battery Pack
AWB	Asymmetric Wide Beam

See individual accessory spec sheet for details.



TEX Squared

ARCHITECTURAL SCALE, WET-LISTED EXTERIOR WALL SCNCE

alva



Tex Squared in Graphite (GR)



TEX-SQ-18 shown in Graphite (GR)



APPLICATIONS

Direct/Indirect luminaire for exterior applications: flanking doors, lobby entrances or between windows. Materials specifically for use in corrosive and harsh environments.

SIZE

- 18.5" L x 18.5" W x 4" D, 15 lbs
- 12" L x 12" W x 4" D, 8 lbs

MOUNTING

- J-Box 3.0 or 4.0 at center or end of fixture
- Steel mounting system with mounting plate and cover with rubber gaskets between the junction box and mounting plate
- Can be mounted vertically or horizontally

SPECIFICATIONS

- IP66 Rated May be Power Washed at High Pressure (100kPa at distance of 3m)
- 120-277V input
- Title 24 Compliant
- ADA Compliant
- 100,000+ hours rated life time
- 10 Year Limited Warranty (excludes shade)

LAMPING

- High efficiency, fully integrated proprietary LED module
- 80 CRI minimum (85 CRI typical)
- CCT Options: 3000K, 3500K
- TEX-SQ-12: 24W. 792 lumens delivered
- TEX-SQ-18: 36W. 1188 lumens delivered
- 0-10V Dimming (100-10%)

CONSTRUCTION

Fixture shell (shade): Heavy gauge aluminum with industrial powder coat finish and high impact acrylic

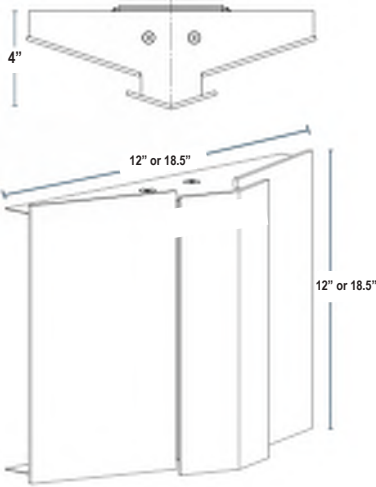
SPECIFICATIONS SUBJECT TO CHANGE

TEX Squared

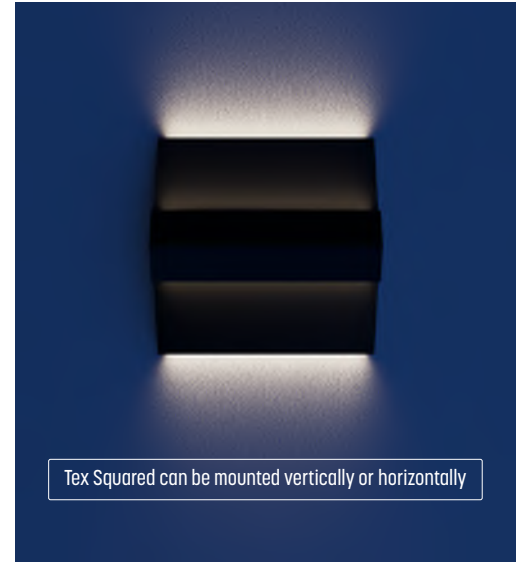
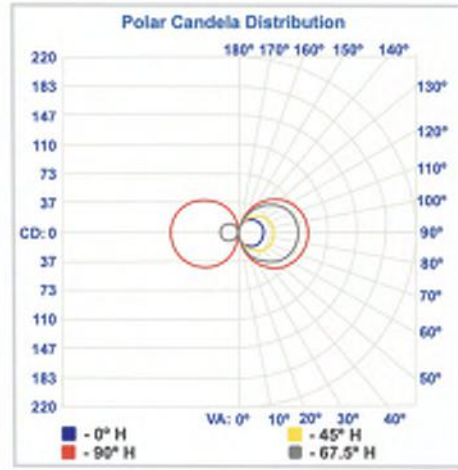
ARCHITECTURAL SCALE, WET-LISTED EXTERIOR WALL SCONCE

alva

DIMENSIONS



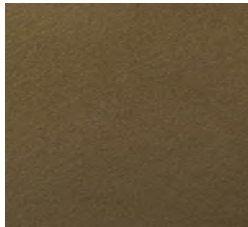
PHOTOMETRIC RESULTS



METAL POWDER COAT FINISH OPTIONS



ESN - Enviro Satin Nickel



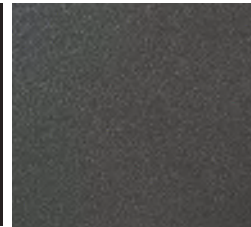
EOB - Enviro Oil-Rubbed Bronze



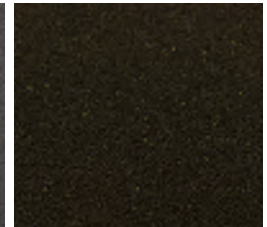
WHT - White



BLK - Black



GR - Graphite



DBT - Dark Bronze Textured



ORDER CODE:

TEX-SQUARED			
MODEL	SIZE	POWDER COAT METAL FINISH	CCT
	18 18.5"L x 18.5"W x 4"D	ESN Enviro Satin Nickel	3000 3000K
	12 12"L x 12"W x 4"D	EOB Enviro Oil-Rubbed Bronze	3500 3500K
		GR Graphite	
		DBT Dark Bronze Textured	
		WHT White	
		BLK Black	

DATE: PROJECT: TYPE:

CATALOG NUMBER LOGIC:



CATALOG NUMBER LOGIC

Example: YO - LED - x43 - WW - BLP - 9 - 11 - CV

MATERIAL

Aluminum

SERIES

YO - Yosemite

SOURCE

LED - Chip on Board Technology

LED TYPE

- x83 - 23W LED/2700K x43 - 34W LED/2700K
- x84 - 23W LED/3000K **x44 - 34W LED/3000K**
- x85 - 23W LED/4000K x45 - 34W LED/4000K

OPTICS

WW - Wall Wash

FINISH (See page 2 for full-color swatches)

Standard Finishes (BZP, BZW, BLP, BLW, WHP, WHW, SAP, VER)

Premium Finish (ABP, AMG, AQW, BCM, BGE, BPP, CAP, CMG, CRI, CRM, HUG, MDS, NBP, OCP, RMG, SDS, SMG, TXF, WCP, WIR)

Also available in RAL Finishes

LENS TYPE

9 - Clear (Standard)

SHIELDING

11 - Honeycomb Baffle

ACCESSORIES

- CV - Cutoff Visor
- CS - Cutoff Snoot
- BD - Adjustable Barn Doors